

February 2025



## PA KEI Update

[Get info about the KEI](#)

---

**Please note: The PA KEI data system is closed for SY 2024-2025 data entry.  
Information will be available in read-only.**

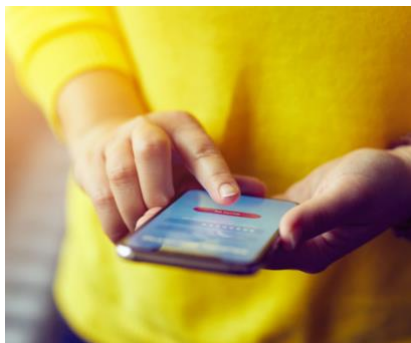
---



### KEI RAW data files now available!

KEI raw data export files are available online! The KEI Team is excited to announce that administrative-level users of the KEI database are able to download their district's KEI Raw Data files. Instructions for how to download KEI Raw Data from the KEI database are available on the KEI website or by clicking [here](#).

---



## Sign up NOW for the School Year 2025-2026 Implementation

All elementary schools are encouraged to implement Pennsylvania's Kindergarten Entry Inventory (PA KEI) in the 2025-2026 school year to assist in meeting federal requirements.

PA KEI is a reliable reporting tool that offers teachers an instructional strategy for understanding and tracking a student's proficiency at kindergarten entry. The PA KEI is available to all local education agencies (LEAs) at no cost.

The PA KEI collects information on a consistent set of standards-based indicators across the commonwealth. The PA KEI is based on Pennsylvania's Learning Standards for Early Childhood and the Pennsylvania Core Standards. PA KEI includes 30 indicators and provides a comprehensive profile that includes the domains of Social and Emotional Development, English Language Arts, Mathematics, Approaches to Learning, and Health, Wellness, and Physical Development. PA KEI is intended to be used by kindergarten teachers to record a student's demonstration of skills within the first 45 calendar days of the kindergarten year. More information is available at [www.kei-pa.org](http://www.kei-pa.org).

The Every Student Succeeds Act (ESSA) provides opportunities to strengthen the contribution of high-quality early childhood education in school reform and improvement efforts. The law recognizes that school success starts before a student enters the K-12 setting and calls on states to describe how they will assist LEAs and elementary schools to collaborate with early childhood education programs, and to invest in evidence-based practices. ESSA supports early learning and LEA collaboration in three main ways: (1) expanding access to high-quality early learning, (2) encouraging alignment and collaboration from birth through third grade, and (3) supporting educators. The PA KEI is a tangible tool to assist LEAs in understanding the comprehensive learning strengths and needs of students entering the K-12 setting, establishing common expectations and language for beginning and extending collaborative conversations with pre-kindergarten programs and families, and planning and implementing joint professional development opportunities that focus on strengthening evidence-based practices for young learners.

Implementing the PA KEI requires a Point of Contact (POC) who will serve as the liaison between LEA administrative staff, implementing kindergarten teachers, the Office of Child Development and Learning (OCDEL), and data systems staff. A dedicated POC ensures effective communication and implementation throughout the PA KEI process.

To initiate PA KEI participation in the 2025-2026 school year, send the POC name, email address, and phone number to [RA-PWOCDELKEI@pa.gov](mailto:RA-PWOCDELKEI@pa.gov) by May 30, 2025.

All kindergarten teachers who have not previously participated must complete a required professional development online course and obtain a certificate of completion. Teachers with an expired proficient user certificate (more than five years since certification) must also complete the professional development online course. More information about taking the online course is [available here](#).

Below is the tentative training schedule and timeline for participation:

- **March-September:** Required professional development online course available
- **August-September:** PA KEI systems professional development opportunities available
- **By the start of school:** Implementing kindergarten teachers must have a required professional development online course certificate of completion on file in order to gain systems access

- **45 calendar days from start of school:** Observation and evidence collection/scoring completed
- **60 calendar days from start of school:** Data submissions (student outcomes) **finalized** within data system.

Questions about this communication may be sent to [RA-PWOCDELKEI@pa.gov](mailto:RA-PWOCDELKEI@pa.gov).

---



## Collecting a Student's Pre-Kindergarten Experience

Information regarding a student's pre-kindergarten program participation is collected from families and added to the student demographic information. This is a required field within the PA KEI data system. Providing information beyond "unknown" enhances the value of PA KEI data, supporting tracking of early education experiences and coordination with feeder programs. This data is best collected during kindergarten registration.

Why is this so important? The Every Student Succeeds Act (ESSA) mandates that Title I- funded LEAs coordinate with Head Start and other Early Education agencies. Knowing the Early Education programs that feed into your school helps develop these coordination agreements effectively.

---

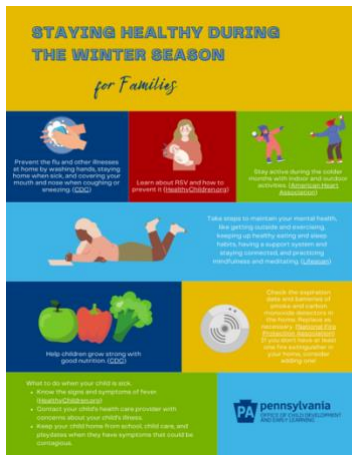


## Kindergarten Here I Am Activity Guides

The Kindergarten Here I Am resource is an activity guide that can inspire skill-building and engagement at home, building on what a child is learning in kindergarten. It's filled with fun learning activities, information, and resources to help families support their kindergartners.

[Sign up to receive the monthly newsletter](#). For more information on Kindergarten Here I Am, or to order no-cost copies to distribute, click [here](#).

---



## Staying Healthy During the Winter Season

The winter season challenges children, families, and staff to remain healthy. Check out tips from the Pennsylvania Office of Child Development and Early Learning (OCDEL) to keep children, families, early childhood education, and school staff healthy this winter.

The [printable flyers](#) for families and for ECE staff are available in English and Spanish.

---



## Online Courses from OCDEL About Pennsylvania's Prenatal to Third Grade (P3) Systems Building Logic Model

Pennsylvania's Prenatal to Third Grade (P3) Systems Building Logic Model supports OCDEL's mission of providing families access to high-quality services to prepare children for school and life success. When early learning settings are implemented with attention to quality and are intentionally aligned with

one another, all children benefit. Comprehensive P3 approaches hold incredible potential to dramatically change the path of opportunity gaps and set young children on solid pathways to educational and lifelong success.

The Pennsylvania P3 Systems Building Logic Model was developed to assist various groups (state agencies, regional teams, and local communities) in planning and implementing innovative P3 policies and practices. OCDEL's Bureau of Policy and Professional Development has developed the following free and low-cost asynchronous courses as companion resources to The Pennsylvania P3 Systems Building Logic Model:

- Understand Context Overview (FREE)
- Understanding Context: The Health and Managed Care Organizations System in PA (FREE)
- Understanding Context: The Public Education System in PA (FREE)
- Understanding Context: The Home Visiting System in PA (FREE)
- Grant Writing 101 (\$5)
- Pennsylvania Professional Standards and Competencies for Early Childhood Educators (FREE)
- P3 Systems Thinking (FREE)
- An Introduction to Pennsylvania's Family Engagement Framework (FREE)
- Transition Across the Early Learning Continuum (FREE)

You can access these courses by searching for them within the PD Registry [www.papdregistry.org](http://www.papdregistry.org) in the training calendar.

If you have any questions or problems, contact Barry Wiestling at [bwiestling@pa.gov](mailto:bwiestling@pa.gov).

---

## **New Course Offerings in the SAS PD Center from the Office of Child Development and Early Learning**

The Office of Child Development and Early Learning (OCDEL) now has four self-paced, online modules available in the SAS PD Center. These courses are applicable to teachers serving children birth through 3<sup>rd</sup> grade. The four available courses include:

1. An Introduction to Pennsylvania's Family Engagement Framework
2. Transition Across the Early Learning Continuum
3. The Pennsylvania Professional Standards and Competencies for Early Childhood Educators
4. Overview of Structured Literacy for the Pre-Kindergarten Educator

Directions for accessing the courses:

- If you do not have a SAS account, create an account by following the directions: [Creating a SAS Account](#).
- If you already have an account, log in and follow the directions: [Accessing the PD Center](#)

If you require any assistance in accessing the course, contact the Help Desk:

Email: [helpdesk@pdesas.org](mailto:helpdesk@pdesas.org)

Phone: Toll Free 1.877.973.3727

Online: [Help Desk](#)

---

## Need a Password Reset?



Resetting your password for PA KEI data system:

1. Go to the website: <http://kei-pa.org>
  2. Select the *Data System Login* tab.
  3. Click on the *I forgot my password* link located below the login boxes.
  4. You will be asked to enter your Username, which should be your school email address.
  5. A password reset email will be sent to you.
  6. Follow the instructions in the email.
- 

## Keeping the PA KEI Software Account Up to Date

If your email address has changed, contact the PA KEI Technical Support for assistance at [KEI@csiu.org](mailto:KEI@csiu.org). It is important to keep email addresses updated to continue to receive important information about the PA KEI system.

---

## Need Help With the KEI?



Each implementing school and/or district has designated a school or district point of contact (KEI-POC). Implementing teachers should request contact information for the designated KEI-POC in your school or district. In addition, the following supports are available:

**GENERAL QUESTIONS** about the KEI or any of the information in this newsletter should be directed to OCDEL staff at [RA-PWOCDELKEI@pa.gov](mailto:RA-PWOCDELKEI@pa.gov).

**TECHNICAL SUPPORT** is available by phone on weekdays from 8am-4pm.

- Jeff Kay: 570-523-1155, Ext. 2137
  - Email your questions during off-hours to [KEI@csiu.org](mailto:KEI@csiu.org)
- 

## Subscribing to the eNewsletter

If you have a co-worker who is participating in KEI, but does not receive the newsletter, email Christy at [cveitch@csiu.org](mailto:cveitch@csiu.org) to request to be added to the listserv.

[Access archived editions.](#)